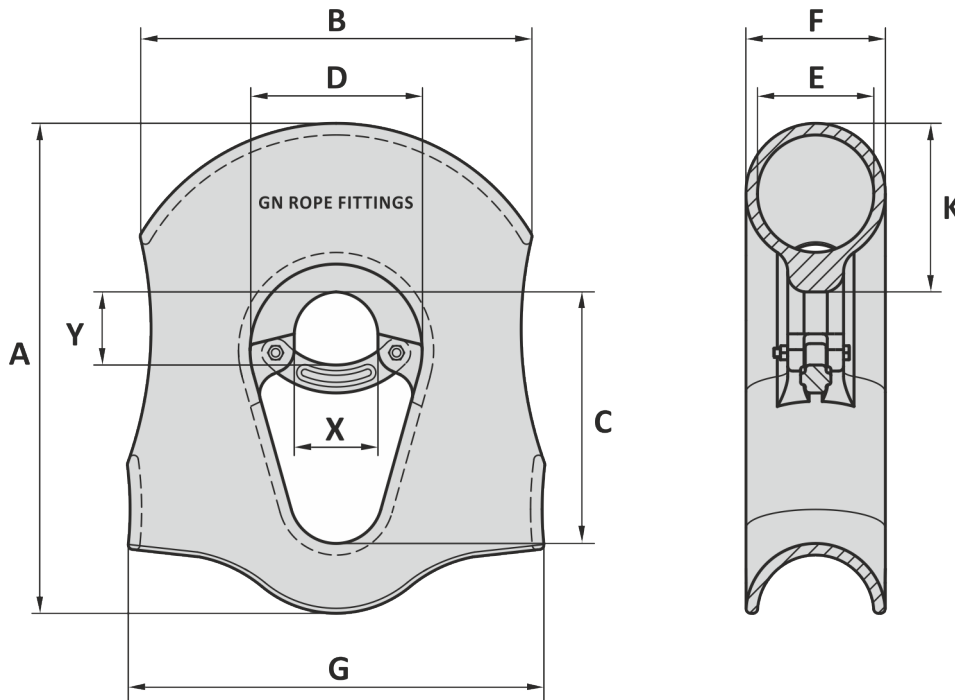
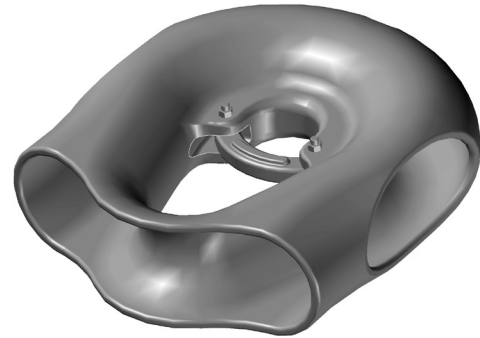


Material : Cast steel
 Stainless steel
 Finish : Galvanized (mild steel)
 Self colored (stainless steel)
 Temperature range : -20°C up to +200°C
 Standard certification : Certificate of Conformity

Suitable for fibre rope
 For connecting to a special shackle we can change dimension X and Y on request



Art. No. steel	Art. No. st. steel	Rope size inch	A mm	B mm	C mm	D mm	E mm	F mm	G mm	K mm	X mm	Y mm	Weight kg
16001113	21001113	11 - 13	530	320	270	175	132	157	477	170	105	105	52
16001415	21001415	14 - 15	655	476	357	258	154	183	598	200	116	124	83
16001618	21001618	16 - 18	795	542	380	283	184	212	721	252	143	143	126
16001921	21001921	19 - 21	940	657	457	348	209	261	880	309	168	177	297
16002224	21002224	22 - 24	1043	814	575	410	244	298	867	360	180	200	406

Tolerance: Cast parts ± 5%, machined parts ± 1 mm

Art. No. steel	Art. No. st. steel	Rope size inch	A inch	B inch	C inch	D inch	E inch	F inch	G inch	K inch	X inch	Y inch	Weight lbs
16001113	21001113	11 - 13	20 7/8	12 1/2	10 5/8	6 7/8	5 3/16	6 3/16	18 25/32	6 11/16	4 1/8	4 1/8	115
16001415	21001415	14 - 15	25 25/32	18 3/4	14 1/16	10 9/32	6 1/16	7 3/16	23 3/16	7 7/8	4 5/16	4 7/8	183
16001618	21001618	16 - 18	31 3/16	21 1/2	14 3/32	11 1/8	7 1/4	8 11/32	28 3/8	9 15/16	5 5/8	5 5/8	278
16001921	21001921	19 - 21	37	25 7/8	18	13 1/16	8 7/32	10 9/32	34 21/32	12 5/32	6 5/8	6 3/32	655
16002224	21002224	22 - 24	41 1/16	32 1/16	22 3/8	16 1/8	9 5/8	11 3/8	34 1/8	14 3/16	7 3/32	7 7/8	895

Tolerance: Cast parts ± 5%, machined parts ± 1/32 inch

08-07-2019