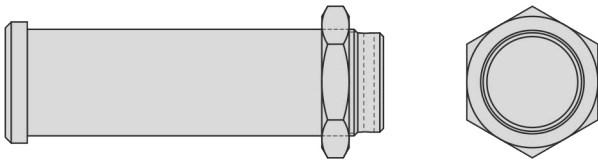
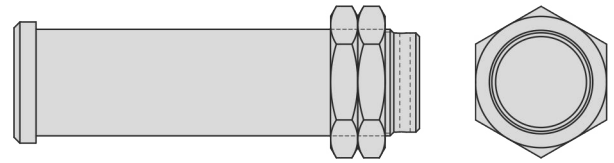


LOCKING DEVICES

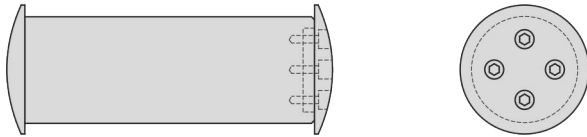
Standard



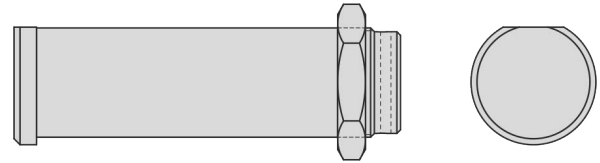
Double nut



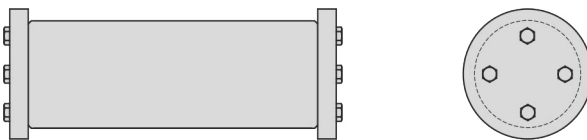
Domed nut



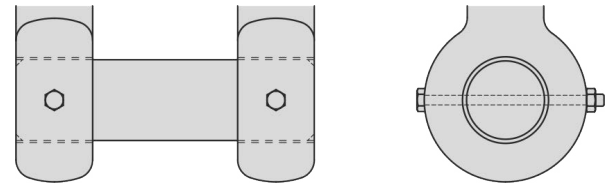
Non-rotating stopper



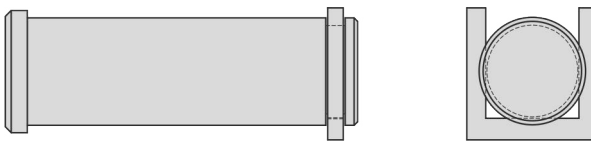
Caps



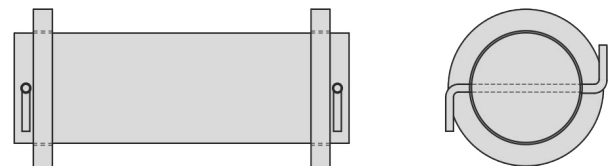
Locking bolt + nut



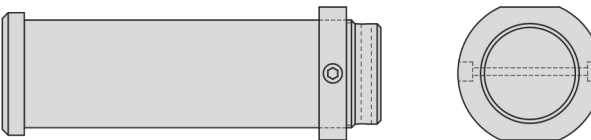
Horse shoe



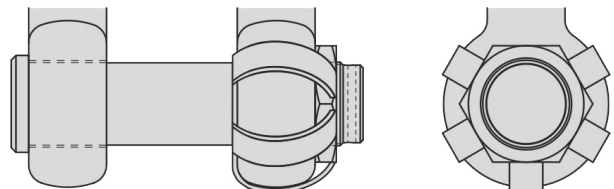
Washers



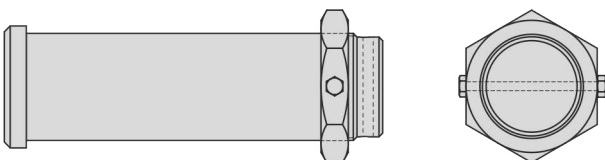
Round nut



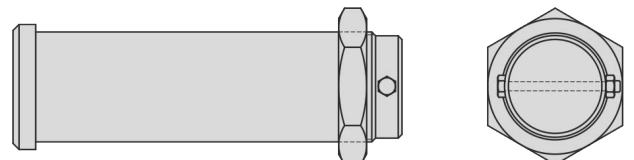
ROV



Cotterpin through the nut



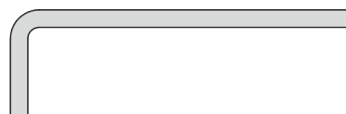
Cotterpin through the bolt



Splitpin



Z-bar



Cotterpin + nut



GENERAL

SHACKLES

THIMBLES

SOCKETS

LINKS

SWIVELS

HOOKS

MOORING

OTHERS