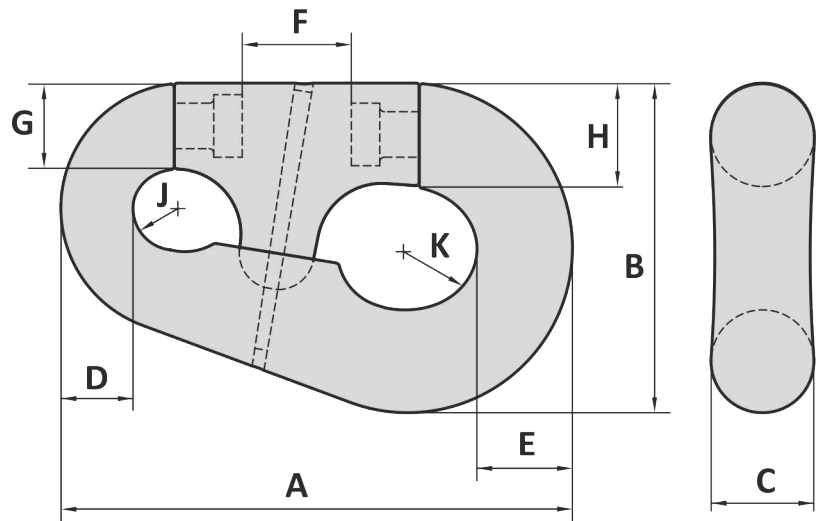


GENERAL  
SHACKLES  
THIMBLES  
SOCKETS  
LINKS  
SWIVELS  
HOOKS  
MOORING  
OTHERS

Material : Alloy steel, Grade R4  
 Finish : Self colored  
 Temperature range : -20°C up to +200°C  
 Standard certification : Certificate of Conformity  
 3.1 material certificate EN 10204

Can be assembled with our range of swivels, CR-sockets and chains



Art. No.	Type No.	Chain mm	A mm	B mm	C mm	D mm	E mm	F mm	G mm	H mm	J mm	K mm	Weight kg
40000106	6	52 - 60	480	337	103	66	83	125	81	103	43	71	61
40000107	7	62 - 79	570	370	113	85	96	155	92	113	49	70	100
40000108	8	81 - 92	655	430	131	99	129	162	119	131	58	81	150
40000110	10	97 - 102	900	580	181	127	168	192	151	181	75	104	385

Tolerance: Forged parts ± 5%

Art. No.	Type No.	Chain inch	A inch	B inch	C inch	D inch	E inch	F inch	G inch	H inch	J inch	K inch	Weight lbs
40000106	6	2 1/16 - 2 3/8	18 29/32	13 1/4	4 1/16	2 19/32	3 1/4	4 15/16	3 3/16	4 1/16	1 11/16	2 13/16	134
40000107	7	2 7/16 - 3 1/8	22 7/16	14 9/16	4 7/16	3 11/32	3 25/32	6 3/32	3 5/8	4 3/16	1 15/16	2 3/4	220
40000108	8	3 3/16 - 3 5/8	25 25/32	16 15/16	5 5/32	3 29/32	5 1/16	6 3/8	4 1/16	5 5/32	2 9/32	3 3/16	331
40000110	10	3 13/16 - 4	35 7/16	22 27/32	7 1/8	5	6 3/8	7 7/16	5 15/16	7 1/8	2 15/16	4 3/32	849

Tolerance: Forged parts ± 5%

18-06-2012