

GENERAL

Material : Alloy steel, Grade R4  
 Finish : Self colored  
 Temperature range : -20°C up to +200°C  
 Standard certification : Certificate of Conformity  
 3.1 material certificate EN 10204

Can be assembled with our range of swivels, CR-sockets and chains

SHACKLES

THIMBLES

SOCKETS

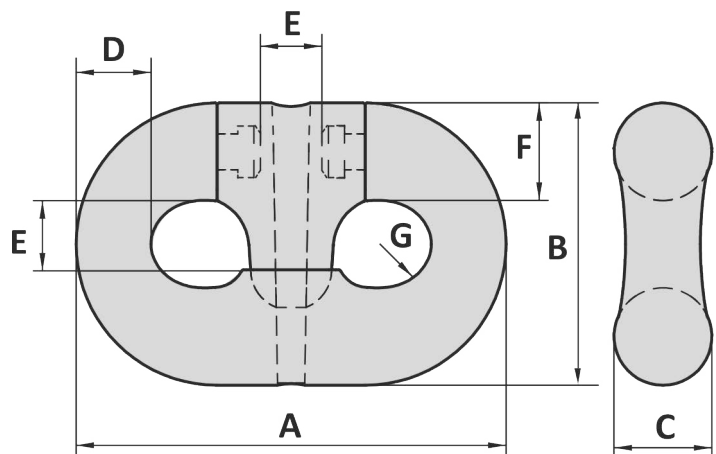
LINKS

SWIVELS

HOOKS

MOORING

OTHERS



| Art. No. | Chain<br>mm | Chain<br>inch | CR socket<br>No. | PL<br>kN | MBL<br>kN | A<br>mm | B<br>mm | C<br>mm | D<br>mm | E<br>mm | F<br>mm | G<br>mm | Weight<br>kg |
|----------|-------------|---------------|------------------|----------|-----------|---------|---------|---------|---------|---------|---------|---------|--------------|
| 40000003 | 76          | 3             | 522 - 528        | 4731     | 6001      | 456     | 296     | 103     | 76      | 89      | 103     | 46      | 58           |
| 40000005 | 84          | 3 ¼           | 524 - 529        | 5682     | 7208      | 498     | 324     | 112     | 83      | 97      | 112     | 50      | 82           |
| 40000004 | 89          | 3 ½           | 524 - 530        | 6310     | 8004      | 534     | 347     | 120     | 89      | 104     | 120     | 53      | 95           |

Tolerance: Forged parts ± 5%

| Art. No. | Chain<br>mm | Chain<br>inch | CR socket<br>No. | PL<br>kN | MBL<br>kN | A<br>inch | B<br>inch | C<br>inch | D<br>inch | E<br>inch | F<br>inch | G<br>inch | Weight<br>lbs |
|----------|-------------|---------------|------------------|----------|-----------|-----------|-----------|-----------|-----------|-----------|-----------|-----------|---------------|
| 40000003 | 76          | 3             | 522 - 528        | 4731     | 6001      | 17 15/16  | 11 23/32  | 4 1/16    | 3         | 3 1/2     | 4 1/16    | 1 13/16   | 128           |
| 40000005 | 84          | 3 ¼           | 524 - 529        | 5682     | 7208      | 19 3/8    | 12 3/4    | 4 13/32   | 3 1/4     | 3 3/16    | 4 13/32   | 1 31/32   | 181           |
| 40000004 | 89          | 3 ½           | 524 - 530        | 6310     | 8004      | 21 1/2    | 13 23/32  | 4 13/32   | 3 1/2     | 4 3/32    | 4 23/32   | 2 3/32    | 209           |

Tolerance: Forged parts ± 5%

11-11-2013