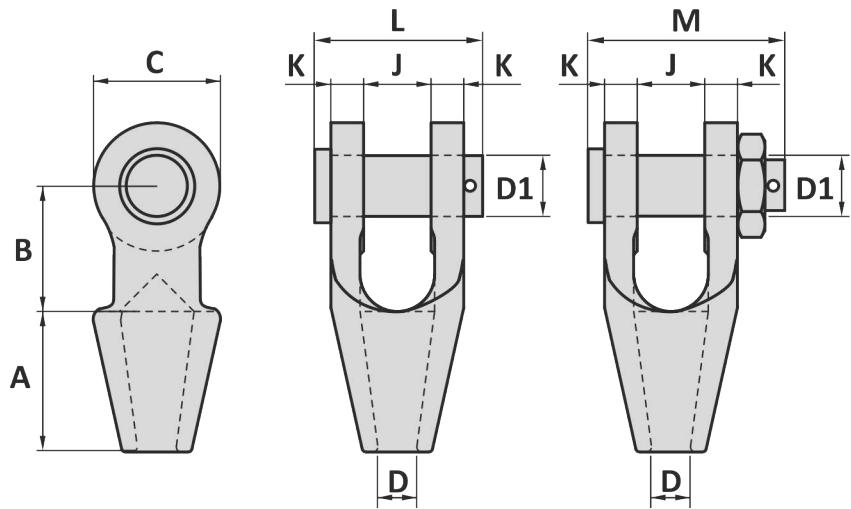


Material : Cast steel
Safety factor : 5 times
Standards : Generally according to US Federal Spec RR-5-550D, type A
Finish : Painted/Galvanized
 ≤ Type No. 115 standard galvanized
Temperature range : -40°F up to +392°F, Polar Rated
Standard certification : Certificate of Conformity
 3.1 material certificate EN 10204

These sockets included our non-rotating system (NRS-system) which prevents the tamp for turning or slipping out of the cone and guarantee a high performance connection.



~ specification: 1 = Painted, 9 = Galvanized

Art. No. Standard	Art. No. Safety pin	Type No.	Wire dia mm	Wire dia inch	WLL ton	MBL ton	A inch	B inch	C inch	D inch	D1 inch	J inch	K inch	L inch	M inch	Packing pcs	Weight lbs
47907089	192	6 - 7	¼	1.6	8	2 1/16	1 1/16	1 1/2	5/16	2 3/32	1 1/16	3/16	2 15/32	10	0.97		
47907109	194	8 - 10	3/8	2.4	12	2 5/32	1 25/32	1 1/16	7/16	1 3/16	2 9/32	7/16	2 29/32	10	1.8		
47907139	196	11 - 13	½	4	20	2 ½	2	1 15/16	9/16	1 ½	1	1 5/32	3 1 1/32	10	2.9		
47907169	198	14 - 16	5/8	6	30	3 1/2	2 ½	2 7/16	2 3/32	1 3/16	1 ¼	9/16	3 1 5/16	10	5.1		
4700100~	4790100~	100	17 - 19	3/4	8	40	3 ½	3	3 15/16	1 1/16	1 3/8	1 ½	3 3 1/2	4 5/16	10	7.1	
4700104~	4790104~	104	20 - 22	7/8	12	60	3 3/32	3 ½	3 3/8	1 5/16	1 5/8	1 3/4	4 7/16	4 1/8	4	12	
4700108~	4790108~	108	23 - 26	1	15	75	4 ½	4	4 ½	1 3/32	2	2	5 5/8	5 13/16	4	21	
4700111~	4790111~	111	27 - 30	1 1/8	20	100	5	4 ½	4 7/8	1 ¼	2 ¼	2 ¼	1	5 1 1/16	6 5/16	4	26
4700115~	4790115~	115	31 - 36	1 ¼ - 1 3/8	25	125	5 15/32	5	5 5/16	1 ½	2 15/32	2 15/32	1 3/32	6 1 1/32	7 ¼	2	35
4700118~	4790118~	118	37 - 39	1 ½	30	150	6	6 3/8	6	1 5/8	2 ¾	3	1 3/16	7	7 13/16	2	53
4700120~	4790120~	120	40 - 42	1 5/8	36	180	6 ½	6 ½	6 5/8	1 ¾	3	3	1 1/16	7 ¼	8 ½	2	64
4700125~	4790125~	125	43 - 48	1 ¾ - 1 7/8	46	230	7 ½	7	7 15/32	2	3 ½	3 ½	1 1 1/32	8 5/32	9 2 1/32		99
4700128~	4790128~	128	49 - 54	2 - 2 1/8	56	280	8 ½	9	8 5/8	2 ¼	3 ¾	3 3 1/32	1 1/16	9 5/8	10 1 1/16		143
4700130~	4790130~	130	55 - 60	2 ¼ - 2 3/8	75	375	9	10	8 7/8	2 1 1/32	4 ¼	4 1/16	2 3/32	10 5/8	11 2 1/32		194
4700132~	4790132~	132	61 - 68	2 ½ - 2 5/8	85	425	9 ¾	10 ¾	9 7/8	2 7/8	4 ¾	5	2 3/8	11 15/16	13 3/16		276
4700135~	4790135~	135	69 - 75	2 5/8 - 2 7/8	100	500	11	11	10 1 1/32	3 3/8	5	5 ¼	2 7/8	13 3/16	14 7/16		357
4700138~	4790138~	138	76 - 80	3 - 3 1/8	120	600	12	11 ¼	10 2 1/32	3 3/8	5 ¼	5 ¾	3	13 15/16	15 3/16		430
4700140~	4790140~	140	81 - 86	3 1/8 - 3 3/8	140	700	13	11 ¼	11 ¼	3 3/8	5 ½	6 ¼	3 3/8	14 1 1/16	16 7/32		494
4700142~	4790142~	142	87 - 93	3 1/2 - 3 5/8	150	750	14	12 ½	12 3/16	3 2 1/32	6	6 ¾	3 ¾	15 15/32	17		617
4700144~	4790144~	144	94 - 102	3 ¾ - 4	190	950	15	13 ½	13 7/8	4 ¼	7	7 ½	3 ½	16 ¾	18 ¼		833
4700146~	4790146~	146	108 - 115	4 ½	240	1200	18 1/8	19	16 15/16	4 15/16	7 15/32	8 3/16	3 3 1/32	18 3/8	20 1/16		1243
4700150~	4790150~	150	122 - 130	5	280	1400	19 1 1/16	19 1 1/16	21 2 1/32	5 1/16	9 2 1/32	8 ¼	4 2 1/32	20 5/32	22 1/16		2033
4700160~	4790160~	160	140 - 155	5 ½ - 6	400	2000	22 2 1/32	19 1 1/16	23 1/32	6 1/16	10 1 1/16	9 1/16	5 ½	22 2 1/32	24 1 1/32		2855
4700170~	4790170~	170	158 - 167	6 ½	500	2500	26 1/16	23 3/8	25 1/16	6 7/8	11 1 1/32	12 1/16	6 7/8	26 3/8	27 1 1/16		4300

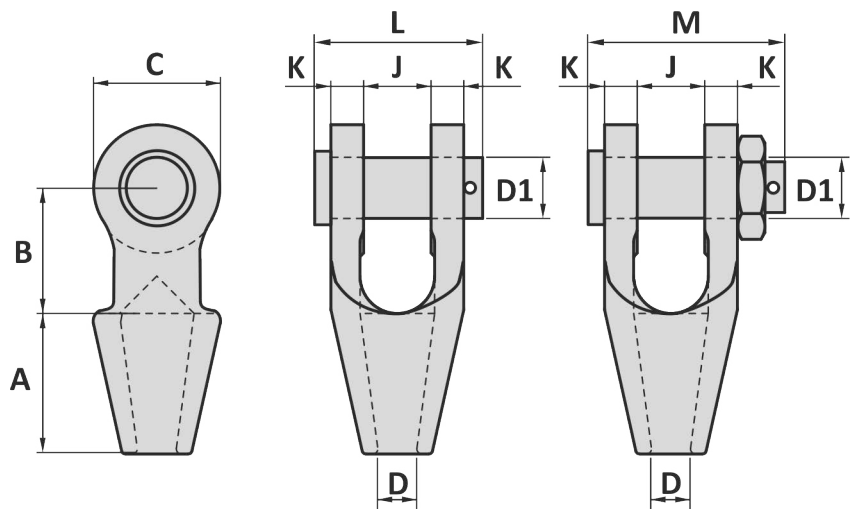
Tolerance: ± 5%, machined parts ± 1/32 inch

08-12-2017

GENERAL SHACKLES THIMBLES SOCKETS LINKS SWIVELS HOOKS MOORING OTHERS

Material : Cast steel
 Safety factor : 5 times
 Standards : Generally according to US Federal Spec RR-5-550D, type A
 Finish : Painted/Galvanized
 ≤ Type No. 115 standard galvanized
 Temperature range : -40°C up to +200°C, Polar Rated
 Standard certification : Certificate of Conformity
 3.1 material certificate EN 10204

These sockets included our non-rotating system (NRS-system) which prevents the tamp for turning or slipping out of the cone and guarantee a high performance connection.



~ specification: 1 = Painted, 9 = Galvanized

Art. No. Standard	Art. No. Safety pin	Type No.	Wire dia mm	Wire dia inch	WLL ton	MBL ton	A mm	B mm	C mm	D mm	D1 mm	J mm	K mm	L mm	M mm	Packing pcs	Weight kg
	47907089	192	6 - 7	¼	1.6	8	52	40	34	8	18	17	8		63	10	0.44
	47907109	194	8 - 10	⅜	2.4	12	58	45	40	11	21	20	11		74	10	0.81
	47907139	196	11 - 13	½	4	20	64	51	49	14	26	25	12		85	10	1.3
	47907169	198	14 - 16	⅝	6	30	77	64	62	18	30	32	14		100	10	2.3
4700100~	4790100~	100	17 - 19	¾	8	40	89	76	100	21	35	38	16	101	110	10	3.2
4700104~	4790104~	104	20 - 22	⅞	12	60	101	89	86	24	41	44	19	113	105	4	5.4
4700108~	4790108~	108	23 - 26	1	15	75	114	101	114	28	51	51	22	130	148	4	9.6
4700111~	4790111~	111	27 - 30	1 ⅛	20	100	127	114	124	32	57	57	25	144	160	4	12
4700115~	4790115~	115	31 - 36	1 ¼ - 1 ⅜	25	125	139	127	135	38	63	63	28	161	184	2	16
4700118~	4790118~	118	37 - 39	1 ½	30	150	152	162	152	41	70	76	30	178	198	2	24
4700120~	4790120~	120	40 - 42	1 ⅝	36	180	165	165	168	44	76	76	33	184	204	2	29
4700125~	4790125~	125	43 - 48	1 ¾ - 1 ⅞	46	230	191	178	190	51	89	89	39	218	245		45
4700128~	4790128~	128	49 - 54	2 - 2 ⅛	56	280	216	229	206	57	95	101	46	244	271		65
4700130~	4790130~	130	55 - 60	2 ¼ - 2 ⅝	75	375	229	254	225	63	108	113	53	270	301		88
4700132~	4790132~	132	61 - 68	2 ½ - 2 ⅞	85	425	248	273	251	73	121	127	60	303	335		125
4700135~	4790135~	135	69 - 75	2 ⅝ - 2 ⅞	100	500	279	279	266	79	127	133	73	335	367		162
4700138~	4790138~	138	76 - 80	3 - 3 ⅝	120	600	305	286	274	86	133	146	76	354	386		195
4700140~	4790140~	140	81 - 86	3 ¼ - 3 ⅝	140	700	330	298	286	92	140	159	79	373	412		224
4700142~	4790142~	142	87 - 93	3 ½ - 3 ⅞	150	750	356	318	310	99	152	171	83	393	432		280
4700144~	4790144~	144	94 - 102	3 ¾ - 4	190	950	381	343	352	108	178	191	89	425	464		378
4700146~	4790146~	146	108 - 115	4 ½	240	1200	460	480	430	125	190	208	101	467	510		564
4700150~	4790150~	150	122 - 130	5	280	1400	500	500	550	138	250	210	120	515	560		922
4700160~	4790160~	160	140 - 155	5 ½ - 6	400	2000	580	500	590	160	275	230	140	580	620		1295
4700170~	4790170~	170	158 - 167	6 ⅛	500	2500	675	600	640	175	290	310	175	670	710		1950

Tolerance: ± 5%, machined parts ± 1 mm

08-12-2017