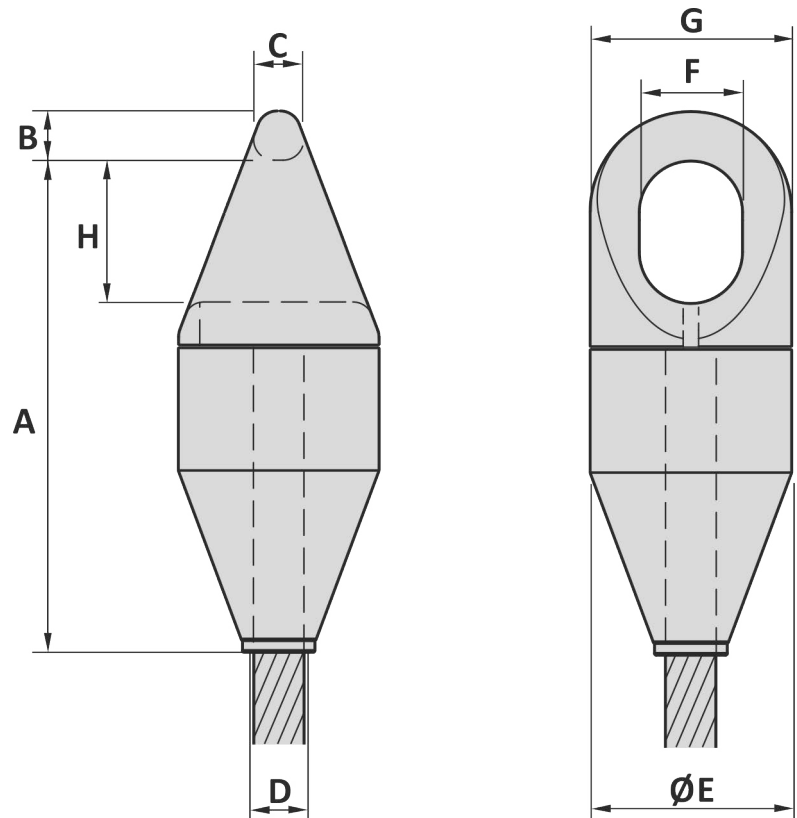


Material : Alloy steel
 Safety factor : 5 times
 Finish : Painted
 Temperature range : -20°C up to +200°C
 Standard certification : Certificate of Conformity



Art. No.	Size inch	Rope dia mm	WLL ton	MBL ton	A mm	B mm	C mm	D mm	E mm	F mm	G mm	H mm	Weight kg
47030250	2	40 - 54	50	250	635	55	50	57	220	115	220	165	117
47030300	2 ¼	55 - 60	60	300	690	65	57	63	238	135	230	195	138
47030400	2 ½	61 - 72	80	400	720	75	65	75	250	150	270	205	165
47030600	3	73 - 84	120	600	835	85	75	86	300	175	342	240	245
47030800	3 ½	85 - 93	160	800	965	105	95	101	330	205	360	285	345
47030900	4	94 - 105	180	900	1060	110	100	108	365	225	380	320	485

Tolerance: ± 5%

Art. No.	Size inch	Rope dia inch	WLL ton	MBL ton	A inch	B inch	C inch	D inch	E inch	F inch	G inch	H inch	Weight lbs
47030250	2	1 ⅙ - 2 ⅛	50	250	25	2 ⅝	1 ⅜	2 ¼	8 ⅝	4 ⅞	8 ⅝	6 ½	258
47030300	2 ¼	2 ⅝ - 2 ⅜	60	300	27 ⅝	2 ⅞	2 ¼	2 ⅝	9 ⅞	5 ⅞	9 ⅞	7 ⅞	304
47030400	2 ½	2 ⅞ - 2 ⅞	80	400	28 ⅞	2 ⅞	2 ⅞	2 ⅞	9 ⅞	5 ⅞	10 ⅞	8 ⅞	364
47030600	3	2 ⅞ - 3 ⅞	120	600	32 ⅞	3 ⅞	2 ⅞	3 ⅞	11 ⅞	6 ⅞	13 ⅞	9 ⅞	540
47030800	3 ½	3 ⅞ - 3 ⅞	160	800	38	4 ⅞	3 ⅞	3 ⅞	13	8 ⅞	14 ⅞	11 ⅞	761
47030900	4	3 ⅞ - 4 ⅞	180	900	41 ⅞	4 ⅞	3 ⅞	4 ⅞	14 ⅞	8 ⅞	14 ⅞	12 ⅞	1069

Tolerance: ± 5%

26-06-2015