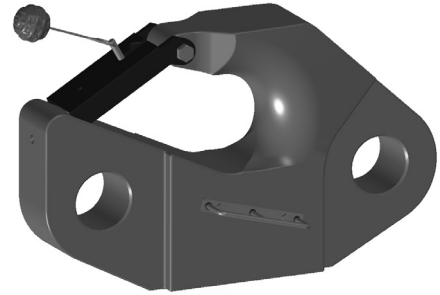
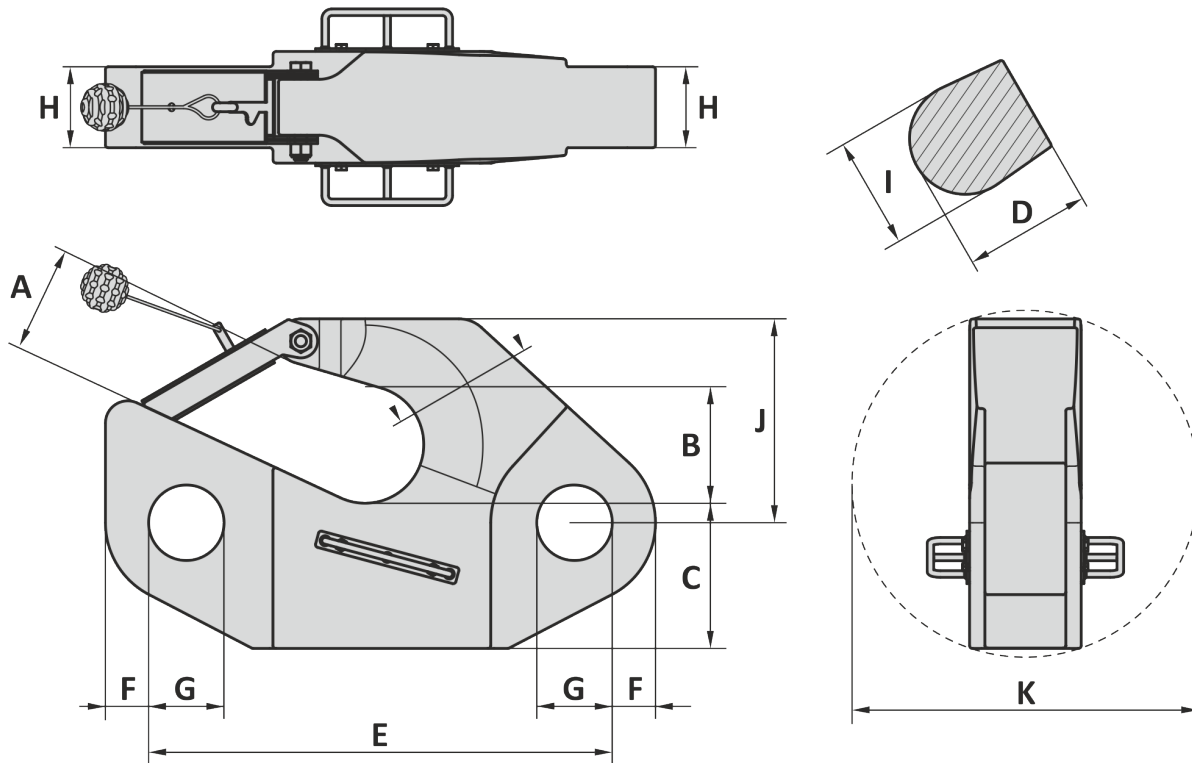


GENERAL  
SHACKLES  
THIMBLES  
SOCKETS  
LINKS  
SWIVELS  
HOOKS  
MOORING  
OTHERS

Material : Alloy steel  
 Safety factor : 4 times  
 Finish : Painted  
 Temperature range : -40°C up to +200°C, Polar Rated  
 Standard certification : Certificate of Conformity  
 3.1 material certificated EN 10204



Non-standard sizes or custom products available on request



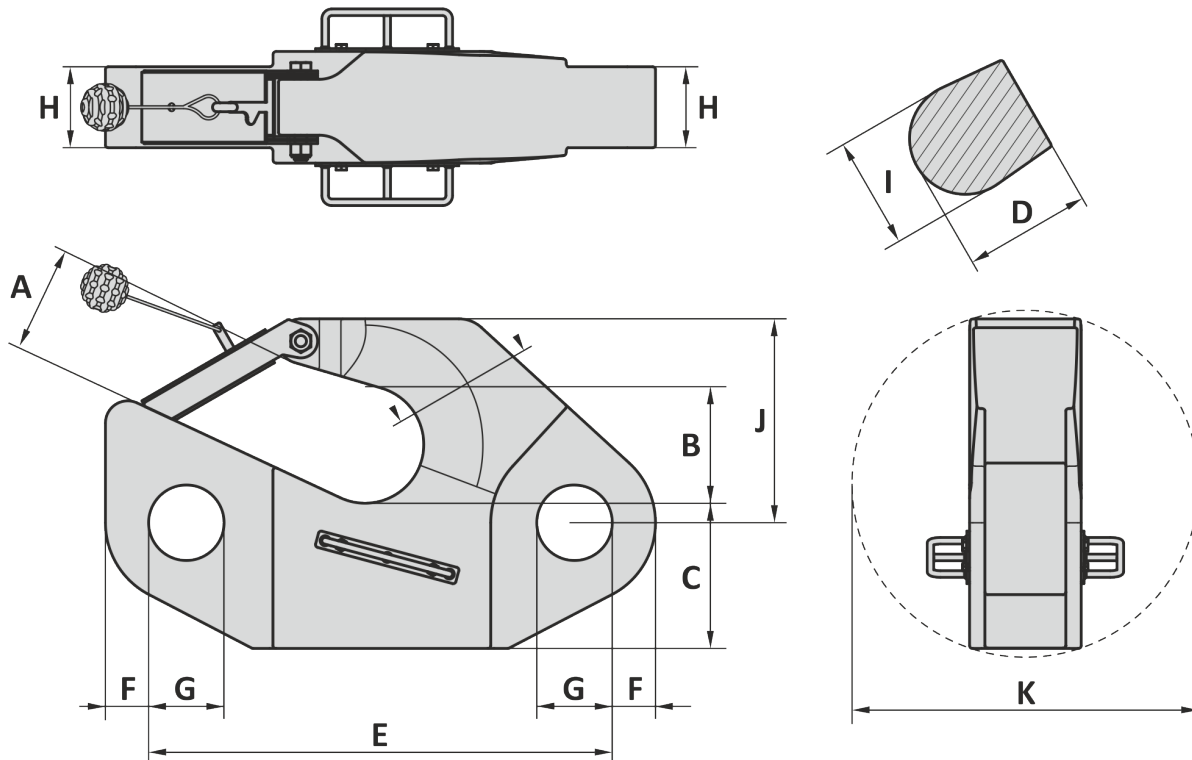
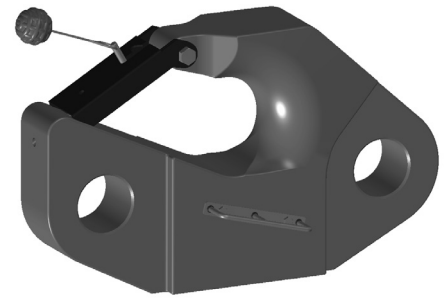
| Art. No. | WLL<br>ton | A<br>inch | B<br>inch | C<br>inch | D<br>inch | E<br>inch | F<br>inch | G<br>inch | H<br>inch | I<br>inch | J<br>inch | K<br>inch | Weight<br>lbs |
|----------|------------|-----------|-----------|-----------|-----------|-----------|-----------|-----------|-----------|-----------|-----------|-----------|---------------|
| 77000032 | 35         | 3 3/16    | 3 1/16    | 4 1/8     | 3 3/4     | 14 3/8    | 1 3/8     | 2 3/8     | 1 3 1/2   | 2 3/4     | 6 11/16   | 10 1/16   | 68            |
| 77000040 | 42.5       | 3 3/4     | 4 5/16    | 4 23/32   | 4 5/16    | 16 1/16   | 1 5/8     | 2 1/16    | 2 5/32    | 3 5/32    | 7 3/32    | 11 1/8    | 93            |
| 77000050 | 55         | 4 3/16    | 4 23/32   | 5 1/2     | 4 15/16   | 18 7/32   | 1 15/16   | 2 7/8     | 2 3/8     | 3 3/16    | 8 1/4     | 13 3/8    | 143           |
| 77000063 | 63         | 4 3/8     | 5 1/8     | 6 1/16    | 5 1/2     | 20 1/16   | 2 3/32    | 3 1/32    | 2 3/4     | 3 15/16   | 9 1/4     | 15 1/32   | 201           |
| 77000080 | 85         | 4 11/16   | 5 1/2     | 7 3/32    | 6 3/16    | 22 1/4    | 2 3/8     | 3 3/16    | 3 5/32    | 4 23/32   | 10 1/32   | 16 3/16   | 293           |
| 77000100 | 100        | 5 27/32   | 6 3/16    | 7 15/32   | 6 11/16   | 24 13/16  | 2 9/16    | 4 3/16    | 3 15/16   | 5 1/2     | 11 1/32   | 18 3/16   | 408           |
| 77000150 | 150        | 6 1/2     | 7 3/32    | 9 1/16    | 7 7/8     | 28 11/32  | 2 3/4     | 4 23/32   | 4 23/32   | 7 3/32    | 13 3/16   | 21 15/16  | 659           |
| 77000200 | 200        | 7 3/32    | 8 1/4     | 10 1/4    | 9 1/16    | 32 11/16  | 3 1/16    | 5 3/16    | 5 23/32   | 7 7/8     | 14 3/8    | 24 7/16   | 1030          |
| 77000250 | 250        | 8 5/8     | 9 27/32   | 11 13/32  | 9 7/16    | 36 3/32   | 3 3/16    | 5 23/32   | 6 11/16   | 9 1/16    | 16 3/4    | 27 29/32  | 1506          |
| 77000300 | 300        | 10 15/32  | 11 13/16  | 12 19/32  | 11 1/32   | 41 13/32  | 3 15/16   | 6 3/16    | 7 3/32    | 10 1/4    | 18 11/16  | 31 3/16   | 2105          |
| 77000400 | 400        | 11 3/32   | 12 19/32  | 13 25/32  | 11 13/16  | 44 9/32   | 4 1/8     | 7 3/32    | 7 7/8     | 11 13/16  | 19 3/8    | 34 3/32   | 2714          |
| 77000500 | 500        | 11 7/8    | 13 3/8    | 15 11/32  | 13        | 47 27/32  | 4 5/16    | 7 15/32   | 8 21/32   | 12 19/32  | 21 21/32  | 37 3/32   | 3468          |
| 77000600 | 600        | 12 3/16   | 13 25/32  | 16 17/32  | 14 3/16   | 50 19/32  | 4 23/32   | 8 1/4     | 9 27/32   | 13 3/8    | 22 27/32  | 39 9/16   | 4268          |
| 77000700 | 700        | 12 23/32  | 14 3/16   | 17 23/32  | 14 9/16   | 52 3/32   | 4 15/16   | 8 27/32   | 11 1/32   | 14 31/32  | 23 3/8    | 41 31/32  | 5146          |
| 77000800 | 800        | 13 1/4    | 14 31/32  | 19 11/16  | 16 17/32  | 58 1/4    | 5 1/2     | 9 7/16    | 11 13/16  | 15 3/4    | 26 3/16   | 45 1/2    | 6878          |

Tolerance: Machined parts ± 1/32 inch

22-08-2023

Material : Alloy steel  
 Safety factor : 4 times  
 Finish : Painted  
 Temperature range : -40°C up to +200°C, Polar Rated  
 Standard certification : Certificate of Conformity  
 3.1 material certificated EN 10204

Non-standard sizes or custom products available on request



| Art. No. | WLL<br>ton | A<br>mm | B<br>mm | C<br>mm | D<br>mm | E<br>mm | F<br>mm | G<br>mm | H<br>mm | I<br>mm | J<br>mm | K<br>mm | Weight<br>kg |
|----------|------------|---------|---------|---------|---------|---------|---------|---------|---------|---------|---------|---------|--------------|
| 77000032 | 35         | 90      | 100     | 105     | 95      | 365     | 35      | 60      | 50      | 70      | 170     | 268     | 31           |
| 77000040 | 42.5       | 95      | 110     | 120     | 110     | 408     | 41      | 68      | 55      | 80      | 180     | 295     | 42           |
| 77000050 | 55         | 106     | 120     | 140     | 125     | 463     | 49      | 73      | 60      | 90      | 210     | 340     | 65           |
| 77000063 | 63         | 111     | 130     | 160     | 140     | 510     | 53      | 85      | 70      | 100     | 235     | 382     | 91           |
| 77000080 | 85         | 119     | 140     | 180     | 160     | 565     | 60      | 90      | 80      | 120     | 255     | 421     | 133          |
| 77000100 | 100        | 147     | 160     | 190     | 160     | 630     | 65      | 110     | 100     | 140     | 280     | 462     | 185          |
| 77000150 | 150        | 165     | 180     | 230     | 200     | 720     | 70      | 120     | 120     | 180     | 335     | 557     | 299          |
| 77000200 | 200        | 185     | 210     | 260     | 220     | 830     | 78      | 135     | 145     | 200     | 365     | 621     | 467          |
| 77000250 | 250        | 219     | 250     | 290     | 240     | 920     | 90      | 150     | 170     | 230     | 425     | 709     | 683          |
| 77000300 | 300        | 266     | 300     | 320     | 270     | 1055    | 100     | 160     | 180     | 260     | 475     | 799     | 955          |
| 77000400 | 400        | 285     | 320     | 350     | 300     | 1125    | 105     | 180     | 200     | 300     | 505     | 869     | 1231         |
| 77000500 | 500        | 302     | 340     | 390     | 320     | 1215    | 110     | 190     | 220     | 320     | 550     | 942     | 1573         |
| 77000600 | 600        | 313     | 350     | 420     | 350     | 1285    | 120     | 210     | 250     | 340     | 580     | 1005    | 1936         |
| 77000700 | 700        | 323     | 360     | 450     | 370     | 1325    | 125     | 220     | 280     | 380     | 600     | 1066    | 2334         |
| 77000800 | 800        | 337     | 380     | 500     | 400     | 1480    | 140     | 240     | 300     | 400     | 665     | 1156    | 3120         |

Tolerance: Machined parts ± 1 mm

22-08-2023