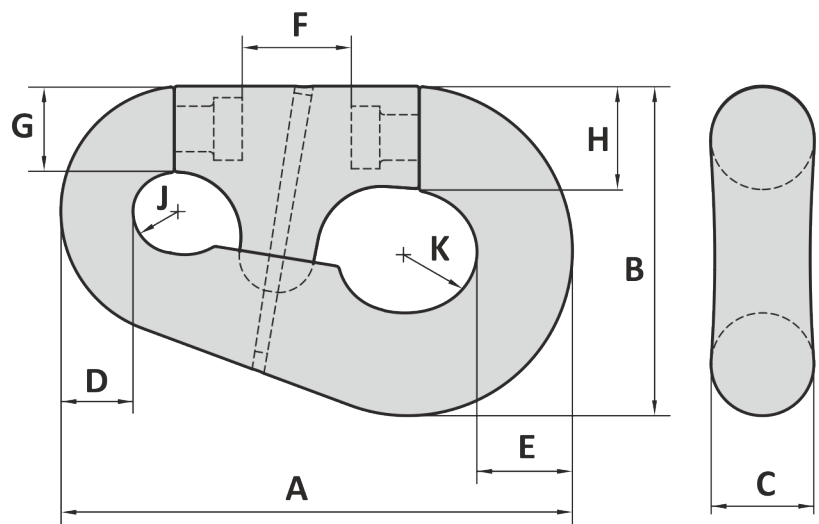


GENERAL
SHACKLES
THIMBLES
SOCKETS
LINKS
SWIVELS
HOOKS
MOORING
OTHERS

Material : Alloy steel, Grade R4
 Finish : Self colored
 Temperature range : -20°C up to +200°C
 Standard certification : Certificate of Conformity
 3.1 material certificate EN 10204

Can be assembled with our range of swivels, CR-sockets and chains



Art. No.	Type No.	Chain mm	A mm	B mm	C mm	D mm	E mm	F mm	G mm	H mm	J mm	K mm	Weight kg
40000106	6	52 - 62	462	315	94	60	81	113	75	90	38	65	54
40000107	7	62 - 79	577	387	121	79	99	153	90	116	48	76	110
40000108	8	81 - 92	658	472	150	92	120	155	112	150	57	89	175

Tolerance: Forged parts ± 5%

Art. No.	Type No.	Chain inch	A inch	B inch	C inch	D inch	E inch	F inch	G inch	H inch	J inch	K inch	Weight lbs
40000106	6	2 1/16 - 2 3/8	18 3/16	12 13/32	3 11/16	2 3/8	3 3/16	4 1/16	2 15/16	3 3/16	1 1/2	2 5/16	119
40000107	7	2 7/16 - 3 1/8	22 23/32	15 1/4	4 3/4	3 1/8	3 29/32	6 1/2	3 5/16	4 5/16	1 7/8	3	243
40000108	8	3 1/16 - 3 5/8	25 29/32	18 19/32	5 29/32	3 5/8	4 23/32	6 3/32	4 13/32	5 29/32	2 1/4	3 1/2	386

Tolerance: Forged parts ± 5%

01-03-2023