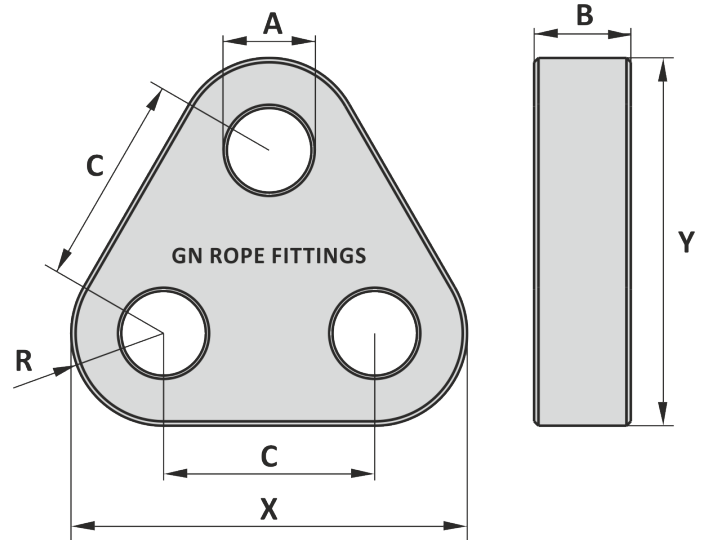
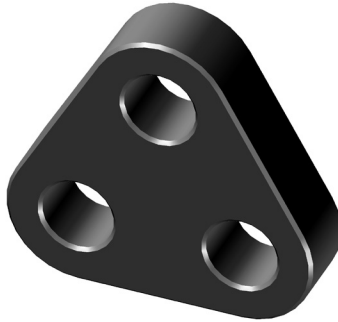


Material : High tensile steel  
 Safety factor : 5 times  
 Finish : Painted  
 Temperature range : -40°C up to +200°C, Polar Rated  
 Standard certification : Certificate of Conformity  
 3.1 material certificate EN 10204

Non-standard sizes or custom products available on request



When there is a minimum distance between the triangle plate and the gap required, we advise to use washers (available on request).

Art. No.	WLL ton	A mm	B mm	C mm	R mm	X mm	Y mm	Weight kg
75001700	17	47	35	120	65	250	234	10
75002500	25	55	40	150	80	310	290	18
75003500	35	60	50	160	90	340	319	28
75005500	55	75	70	210	105	420	392	58
75008500	85	90	80	230	135	500	469	96
75012000	120	105	100	280	170	620	582	188
75015000	150	115	110	320	185	690	647	256
75017500	175	115	110	320	195	710	667	274
75020000	200	140	120	390	215	820	768	390
75025000	250	150	140	390	240	870	818	518
75030000	300	160	150	420	250	920	864	617
75040000	400	185	200	490	300	1090	1024	1170
75050000	500	200	200	550	360	1270	1196	1619
75060000	600	220	200	600	400	1400	1320	1972
75070000	700	230	250	600	400	1400	1320	2452
75080000	800	240	250	680	440	1560	1469	3062
75090000	900	260	300	680	440	1560	1469	3619

Tolerance: Forged parts ± 5%, machined parts ± 1 mm

Art. No.	WLL ton	A inch	B inch	C inch	R inch	X inch	Y inch	Weight lbs
75001700	17	1 27/32	1 3/8	4 23/32	2 9/16	9 27/32	9 7/32	22
75002500	25	2 5/32	1 9/16	5 29/32	3 5/32	12 3/16	11 13/32	40
75003500	35	2 3/8	1 31/32	6 3/16	3 9/16	13 3/8	12 9/16	62
75005500	55	2 15/16	2 3/4	8 1/4	4 1/8	16 1/32	15 7/16	128
75008500	85	3 9/16	3 3/32	9 1/16	5 5/16	19 1/16	18 19/32	212
75012000	120	4 1/8	3 15/16	11 1/32	6 1/16	24 1/32	22 29/32	414
75015000	150	4 17/32	4 3/16	12 19/32	7 7/32	27 7/32	25 15/32	564
75017500	175	4 17/32	4 3/16	12 19/32	7 11/16	27 19/16	26 1/4	604
75020000	200	5 1/2	4 23/32	15 11/32	8 15/32	32 3/32	30 1/4	860
75025000	250	5 29/32	5 1/2	15 11/32	9 1/16	34 1/4	32 3/16	1142
75030000	300	6 5/16	5 29/32	16 17/32	9 27/32	36 7/32	34	1360
75040000	400	7 9/32	7 7/8	19 9/32	11 13/16	42 29/32	40 5/16	2579
75050000	500	7 7/8	7 7/8	21 21/32	14 3/16	50	47 3/32	3569
75060000	600	8 21/32	7 7/8	23 5/8	15 3/4	55 1/8	51 31/32	4348
75070000	700	9 1/16	9 27/32	23 5/8	15 3/4	55 1/8	51 31/32	5406
75080000	800	9 7/16	9 27/32	26 25/32	17 9/16	61 1/32	57 27/32	6751
75090000	900	10 1/4	11 13/16	26 25/32	17 9/16	61 1/32	57 27/32	7979

Tolerance: Forged parts ± 5%, machined parts ± 1/32 inch

13-11-2024