

Material : Alloy steel
 Safety factor : 5 times
 Finish : Painted
 Temperature range : -40°C up to +200°C, Polar Rated
 Standard certification : Certificate of Conformity
 3.1 material certificate EN 10204

Non-standard sizes or custom products available on request

GENERAL

SHACKLES

THIMBLES

SOCKETS

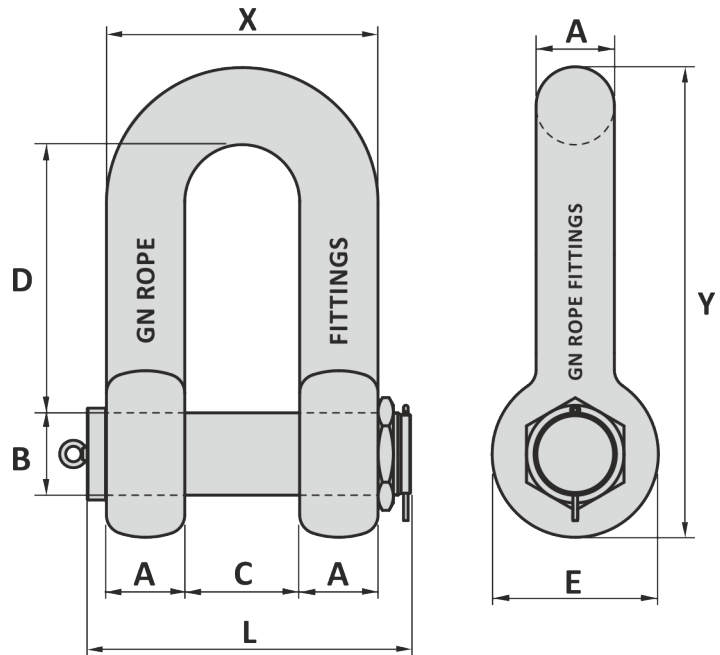
LINKS

SWIVELS

HOOKS

MOORING

OTHERS



Art. No.	WLL ton	A mm	B mm	C mm	D mm	E mm	L mm	X mm	Y mm	Weight kg
32001209	120	89	95	150	270	200	420	328	504	100
32001508	150	102	108	170	315	230	475	374	586	143
32001759	175	100	110	150	360	220	450	350	625	135
32002009	200	120	125	180	500	260	520	420	813	239
32002509	250	130	140	195	460	280	565	455	795	268
32003009	300	140	150	205	500	300	595	485	855	332
32003509	350	150	160	220	520	320	630	520	910	403
32004009	400	160	170	235	580	340	665	555	965	484
32005009	500	170	180	250	600	360	700	590	1025	576
32006009	600	180	190	265	620	380	735	625	1080	678
32007009	700	190	205	285	665	410	795	665	1063	837

Tolerance: Inside length ± 7.5%, all other forged parts ± 5%, machined parts ± 1 mm

Art. No.	WLL ton	A inch	B inch	C inch	D inch	E inch	L inch	X inch	Y inch	Weight lbs
32001209	120	3 1/2	3 3/4	5 29/32	10 3/8	7 7/8	16 11/32	12 29/32	19 27/32	220
32001508	150	4	4 1/4	6 1/16	12 13/32	9 1/16	18 11/16	14 23/32	23 1/16	315
32001759	175	3 15/16	4 3/16	5 29/32	14 3/16	8 21/32	17 23/32	13 25/32	24 3/8	298
32002009	200	4 23/32	4 15/16	7 3/32	19 11/16	10 1/4	20 15/32	16 11/32	32	527
32002509	250	5 1/8	5 1/2	7 1/16	18 1/8	11 1/32	22 1/4	17 29/32	31 5/16	591
32003009	300	5 1/2	5 29/32	8 1/16	19 11/16	11 13/16	23 1/16	19 3/32	33 21/32	732
32003509	350	5 29/32	6 3/16	8 21/32	20 15/32	12 19/32	24 13/16	20 15/32	35 13/16	888
32004009	400	6 3/16	6 1/16	9 1/4	22 27/32	13 3/8	26 3/16	21 27/32	38	1067
32005009	500	6 11/16	7 3/32	9 23/32	23 5/8	14 3/16	27 1/16	23 3/32	40 11/32	1270
32006009	600	7 3/32	7 15/32	10 3/16	24 13/32	14 3/32	28 15/16	24 3/8	42 1/2	1495
32007009	700	7 15/32	8 1/16	11 1/32	26 3/16	16 1/8	31 1/16	26 3/16	41 27/32	1845

Tolerance: Inside length ± 7.5%, all other forged parts ± 5%, machined parts ± 1/32 inch

21-06-2024