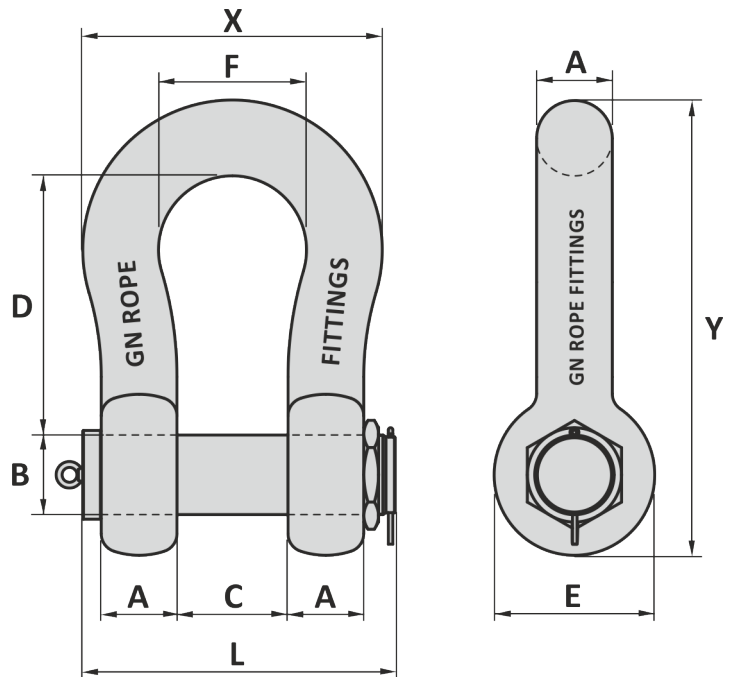
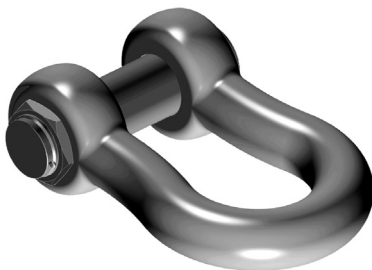


Material : Alloy steel  
 Safety factor : 5 times  
 Finish : ≤ 55 ton galvanized  
           > 55 ton painted  
 Temperature range : ≤ 55 ton -20°C up to +200°C  
                           > 55 ton -40°C up to +200°C, Polar Rated  
 Standard certification : Certificate of Conformity  
                                   3.1 material certificate EN 10204  
                                   ≤ 300 ton Type Approved Product

Non-standard sizes or custom products available on request



\* Shackles from WLL 30 ≤ 120 ton are not supplied with an eyebolt

Art. No.	WLL ton	A mm	B mm	C mm	D mm	E mm	F mm	L mm	X mm	Y mm	Weight kg
38000259	30	38	42	60	146	88	99	202	175	249	8.4
38000400	40	45	50	74	178	103	126	249	216	300	15
38000550	55	57	57	83	197	117	138	286	252	341	22
37000855	85	70	70	105	260	143	180	344	320	437	42
37001105	120	80	83	127	329	162	190	372	350	532	70
37001409	150	90	95	135	380	200	240	405	420	613	110
37001759	175	102	108	140	400	230	250	440	450	669	150
37002008	200	120	121	180	500	260	290	525	530	811	225
37002508	250	125	127	220	520	260	325	575	575	839	300
37003008	300	135	152	220	500	305	330	605	610	869	352
37004008	400	165	178	220	572	350	330	655	655	1001	537

Tolerance: Inside length ± 7.5%, all other forged parts ± 5%, machined parts ± 1 mm

Art. No.	WLL ton	A inch	B inch	C inch	D inch	E inch	F inch	L inch	X inch	Y inch	Weight lbs
38000259	30	1 1/2	1 7/32	2 3/8	5 3/4	3 15/32	3 29/32	7 15/16	6 7/8	9 13/16	19
38000400	40	1 25/32	1 31/32	2 29/32	7	4 1/16	4 3/32	9 13/16	8 1/2	11 13/16	33
38000550	55	2 1/4	2 1/4	3 1/4	7 3/4	4 5/8	5 7/16	11 1/4	9 15/16	13 7/16	49
37000855	85	2 3/4	2 3/4	4 1/8	10 1/4	5 5/8	7 3/32	13 9/16	12 19/32	17 3/16	93
37001105	120	3 3/32	3 1/4	5	12 15/16	6 3/8	7 15/32	14 21/32	13 25/32	20 15/16	154
37001409	150	3 9/16	3 3/4	5 5/16	14 31/32	7 7/8	9 1/16	15 15/16	16 17/32	24 1/8	243
37001759	175	4	4 1/4	5 1/2	15 3/4	9 1/16	9 27/32	17 5/16	17 23/32	26 11/32	331
37002008	200	4 23/32	4 3/4	7 3/32	19 1/16	10 1/4	11 13/32	20 11/16	20 7/8	31 15/16	496
37002508	250	4 15/16	5	8 21/32	20 15/32	10 1/4	12 13/16	22 5/8	22 5/8	33 1/32	661
37003008	300	5 5/16	6	8 21/32	19 1/16	12	13	23 13/16	24	34 7/32	776
37004008	400	6 1/2	7	8 21/32	22 1/16	13 25/32	13	25 25/32	25 25/32	39 13/32	1184

Tolerance: Inside length ± 7.5%, all other forged parts ± 5%, machined parts ± 1/32 inch

08-05-2018