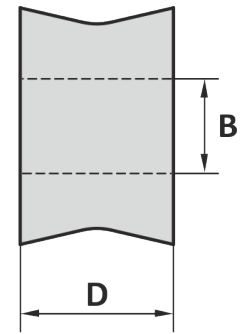
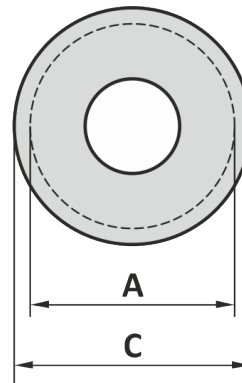
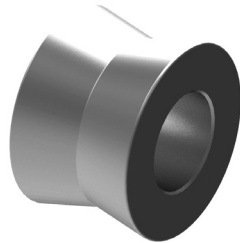


Material : Mild steel
 Finish : Painted
 Temperature range : -20°C up to +200°C
 Standard certification : Certificate of Conformity
 3.1 material certificate EN 10204

to suit: **shackle - rope**
H- or Y-link - rope
plate connector - rope



Art. No.	suitable shackle	A mm	B mm	C mm	D mm	Weight kg
31222401	H9 4,75 ton	55	26	75	30	0.59
31242701	H9 6,5 ton	55	29	75	34	0.68
31273001	H9 8,5 ton	55	32	75	38	0.69
31303601	H9 12 ton	60	38	90	45	1.0
31353901	H9 13,5 ton	60	41	90	50	1.1
18000017	H9 17 ton - H14 30 ton	87	48	100	57	2.3
18000025	H9 25 ton	104	55	120	69	4.0
18000035	H9 35 ton	122	60	140	79	6.6
18000040	H14 40 ton	122	55	140	79	6.9
18000054	H14 55 ton	129	60	150	90	8.8
18000055	H9 55 ton - H14 75 ton	137	75	160	100	10
18000085	H9 85 ton - H14 125 ton	152	88	180	122	15
18000120	H10 120 ton - H14 150 ton	168	100	200	140	20
18000150	H10 150 ton - H14 200 ton	185	112	220	150	26
18000200	H10 200 ton - H14 250 ton	211	133	250	170	37
18000250	H10 250 ton - H14 300 ton	237	145	280	185	52
18000300	H10 300 ton	275	155	320	195	77
18000400	H10 400 ton - H14 400 ton	299	180	350	220	99
18000500	H10 500 ton - H14 500 ton	323	190	380	245	132

Tolerance: Machined parts ± 1 mm

Art. No.	suitable shackle	A inch	B inch	C inch	D inch	Weight lbs
31222401	H9 4,75 ton	2 5/32	1 1/32	2 15/16	1 3/16	1.3
31242701	H9 6,5 ton	2 5/32	1 1/8	2 15/16	1 11/32	1.5
31273001	H9 8,5 ton	2 5/32	1 1/4	2 15/16	1 1/2	1.5
31303601	H9 12 ton	2 3/8	1 1/2	3 9/16	1 25/32	2.3
31353901	H9 13,5 ton	2 3/8	1 5/8	3 9/16	1 31/32	2.3
18000017	H9 17 ton - H14 30 ton	3 7/16	1 7/8	3 15/16	2 1/4	5.1
18000025	H9 25 ton	4 3/32	2 5/32	4 23/32	2 23/32	8.8
18000035	H9 35 ton	4 13/16	2 3/8	5 1/2	3 1/8	15
18000040	H14 40 ton	4 13/16	2 5/32	5 1/2	3 1/8	15
18000054	H14 55 ton	5 1/16	2 3/8	5 29/32	3 9/16	19
18000055	H9 55 ton - H14 75 ton	5 3/8	2 15/16	6 5/16	3 15/16	22
18000085	H9 85 ton - H14 125 ton	6	3 15/32	7 3/32	4 13/16	33
18000120	H10 120 ton - H14 150 ton	6 5/8	3 15/16	7 7/8	5 1/2	44
18000150	H10 150 ton - H14 200 ton	7 9/32	4 13/32	8 21/32	5 29/32	57
18000200	H10 200 ton - H14 250 ton	8 5/16	5 1/4	9 27/32	6 11/16	82
18000250	H10 250 ton - H14 300 ton	9 5/16	5 23/32	11 1/32	7 9/32	15
18000300	H10 300 ton	10 13/16	6 3/32	12 19/32	7 11/16	170
18000400	H10 400 ton - H14 400 ton	11 25/32	7 3/32	13 25/32	8 21/32	218
18000500	H10 500 ton - H14 500 ton	12 23/32	7 13/32	14 31/32	9 21/32	291

Tolerance: Machined part ± 1/32 inch

12-02-2021