

INTRODUCTION

GN Rope Fittings was founded in **1923** by the Bon brothers under the name Smederij N.G. Bon. In **1938**, the company was taken over by the Bodegraven brothers and renamed N.V. Nieuwkoopse Stoomsmederij.

In **1960**, this company expanded by merging with Grofsmederij Uithoorn BV and its new owners, the Vossenbergh family - who were related to the Bodegraven family. Both companies supplied equipment to the shipping, fishing and offshore industries. After some time, the two companies merged to form Grofsmederij Nieuwkoop BV located in Nieuwkoop.

Today, Grofsmederij Nieuwkoop B.V., known internationally as GN Rope Fittings, is one of the leading manufacturers of mooring and heavy lifting accessories in the offshore industry and is still owned by the Vossenbergh family.

GN Rope Fittings
Grofsmederij Nieuwkoop BV
Transportweg 47
2421 LT Nieuwkoop
The Netherlands

Tel.: +31 172 579 303
E-mail: sales@gnweb.com
Internet: www.gnweb.com

Bankers: ABN-AMRO bank N.V.
Account number: 4692.25.696
Swift code: ABNANL2A
IBAN: NL51ABNA0469225696

VAT number: NL0010.56.839.B01
Chamber of commerce: Leiden reg.no. 28003642



GENERAL

SHACKLES

THIMBLES

SOCKETS

LINKS

SWIVELS

HOOKS

MOORING

OTHERS

LIST OF ABBREVIATION

In this catalogue, the following abbreviations have been used:

ABNT	Associação Brasileira de Normas Técnicas
ABS	American Bureau of Shipping
BV	Bureau Veritas
C	Celsius
cc	cubic centimeter
CR	Chain-Rope
CR-D	Chain-Rope Detachable
DIN	Deutsches Institut für Normung
DNV	Det Norske Veritas
EN	European Standard
F	Fahrenheit
FEA	Finite Element Analysis
GN	Grofsmederij Nieuwkoop
HMPE	High-Modulus Polyethylene
ISO	International Organization of Standardization
kg	kilogram
kN	kilonewton
lbs	pounds
LTM	Long Term Mooring
MBL	Minimum Break Load
MPI	Magnetic Particle Inspection
mm	millimeter
NDT	Non-destructive testing
NEN	Nederlandse Norm
NRS	Non-rotating stopper
OHSAS	Occupational Health and Safety Assessment Specification
PL	Proof Load
PMS	Permanent Mooring System
ROV	Remotely Operated Vehicle
SWL	Safe Working Load
US	Ultrasonic Inspection
WLL	Working Load Limit
Product codes	
H	Shackle
D	Shackle
K	Thimble
SO	Socket
SC	Link
SW	Swivel
HK	Hook
BL	Block
T	Turnbuckle
TF	Tuning fork
TR	Triangle plate
WC	Wire rope clip

CONVERSION FACTORS

To convert from:	To:	Multiply by:
Length		
mm	inch	0.03937
inch	mm	25.4
m	foot (12 inch)	3.28084
foot (12 inch)	m	0.3048
Volume		
cc (cm ³)	ci (in ³)	0.06102
ci (in ³)	cc (cm ³)	16.38706
Mass		
metric tons	pounds	2204.62262
pounds	metric tons	0.00045
pounds	kilogram	0.45359
kilogram	pounds	2.20462
US tons (short tons)	metric tons	0.90718
metric tons	US tons (short tons)	1.10231
metric tons	kilogram	1000
kilogram	metric tons	0.001
metric tons	kilo Newton	9.80665
kilo Newton	metric tons	0.10197
kips	kilo Newton	4.44822
kilo Newton	kips	0.22481
Torque		
Newton meter	foot pound-force	0.73756
foot pound-force	Newton meter	1.35582
Temperature		
Celsius (Tc)	Fahrenheit (Tf)	$(Tc * 1.8) + 32$
Fahrenheit (Tf)	Celsius (Tc)	$(Tf - 32) * 0.55556$

GENERAL

SHACKLES

THIMBLES

SOCKETS

LINKS

SWIVELS

HOOKS

MOORING

OTHERS

Certificates Inspection and documents

GN products are available with several types of applicable certifications.
GN is approved manufacturer for different type of products by several classification societies.
For (special) products we can arrange for third-party design approvals.

On request we can deliver our products with the following certificates and inspections:

- Certificate of conformity.
- Certificate of Origin.
- Material certificate in accordance with EN 10204 - 3.1 or 3.2
- Load test certificate.
- NDT inspection, Magnetic Particle Inspection (M.P.I.) and Ultrasonic Inspection (U.S.)
- Classification society inspection certificate.
- Design approval certificate.
- FEA strength and Fatigue calculations.

M.P.I.	
Examination standard	EN10228-1:2012
Acceptance standard	DNV-OS-E302

U.S.	
Examination standard	EN10228-3:2012
Acceptance standard	EN10228-3:2012

You will find the cost of the certificates in our latest price list or you can ask our sales team for the applicable certification each product type.

CERTIFICATES



ABS
Manufacturer
approval



ABS
Quality
assurance
program



BV
Manufacturer
approval



DNV
ISO9001



DNV
ISO14001



DNV
ISO45001



DNV
Manufacturer
approval



DNV
OS E302



DNV
OS E304



Lloyd's
Manufacturer
approval



Lloyd's
Approved
testhouse

GENERAL

SHACKLES

THIMBLES

SOCKETS

LINKS

SWIVELS

HOOKS

MOORING

OTHERS

Our products can be proof load tested, break load tested and fatigue cycled tested on our own, in-house developed 1250, 3000 and 6000 tonne test rig. These can be subjected to NDT tests by our level 2 certified staff.

Calculation of test load according as follows:

Lifting shackles

≤ 85 ton

$$PL = (2,0 \times WLL) \text{ ton}$$

> 85 ton

$$PL = (1,22 \times WLL + 20) \text{ ton}$$

Shackle type H11

$$PL = (1,5 \times WLL) \text{ ton}$$

Shackles type D14, D16 and D17

PL = according to the offshore mooring chain guide

MBL = according to the offshore mooring chain guide

Sockets

$$PL = (2,0 \times WLL) \text{ ton}$$

Links type SC1, SC5 and SC11 ≤ 85 ton

$$PL = (2,0 \times WLL) \text{ ton}$$

> 85 ton

$$PL = (1,5 \times WLL) \text{ ton}$$

Link type SC2

$$PL = (2,0 \times WLL) \text{ ton}$$

Links type SC3, SC4 and SC6 up to SC10

PL = according to the offshore mooring chain guide

Hooks, swivels, turnbuckles,
tuningforks and triangle plates

≤ 25 ton

$$PL = (2,0 \times WLL) \text{ ton}$$

> 25 ton

$$PL = (1,22 \times WLL + 20) \text{ ton}$$

Fatigue calculation of test load according as follows:

For lifting component

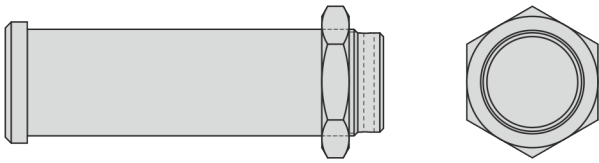
$$1,5 \times WLL \times 20000$$

For mooring component

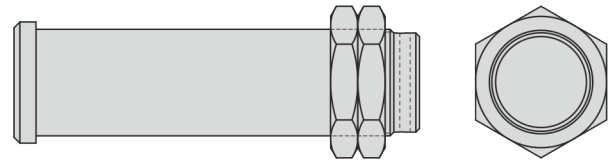
$$(\text{various load}) \times (\text{quantity of cycles})$$

LOCKING DEVICES

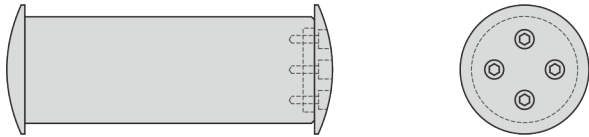
Standard



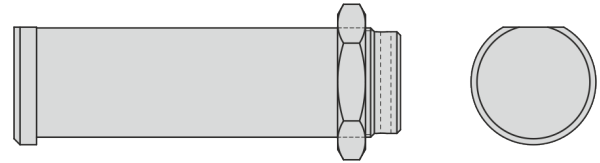
Double nut



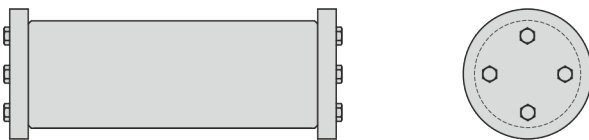
Domed nut



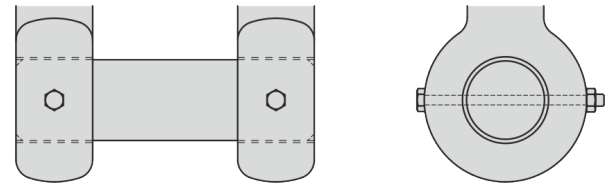
Non-rotating stopper



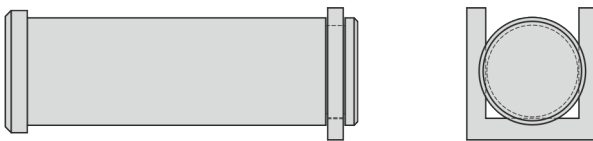
Caps



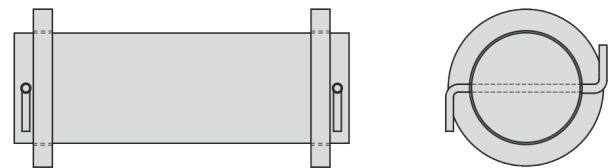
Locking bolt + nut



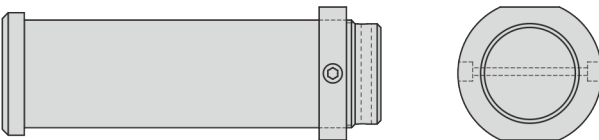
Horse shoe



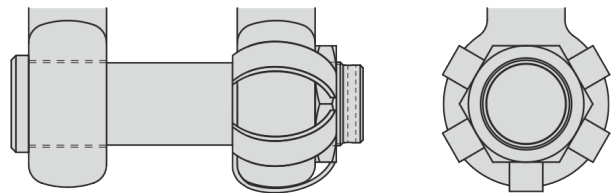
Washers



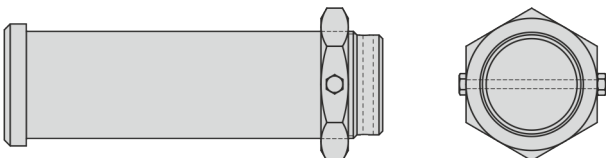
Round nut



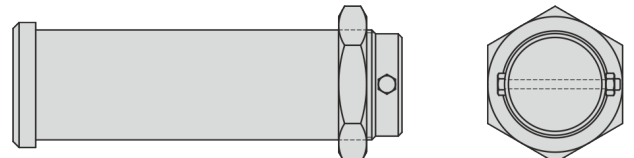
ROV



Cotterpin through the nut



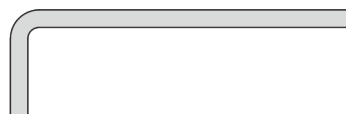
Cotterpin through the bolt



Splitpin



Z-bar



Cotterpin + nut



GENERAL

SHACKLES

THIMBLES

SOCKETS

LINKS

SWIVELS

HOOKS

MOORING

OTHERS